

leonpa.org

Bert Hartsfield, CFA Leon County Property Appraiser

Bert Hartsfield



[Home](#)

[Search](#)

[Resources](#) ▶

[Forms](#)

[Tax Estimator](#)

[F.A.Q.](#)

[Address Change](#)

As Leon County Property Appraiser, I'd like to welcome you to our website. We offer this service as an extension of our office and hope that you will find it useful in obtaining information on properties in Leon County.

The primary mission of the Leon County Property Appraiser's Office is to locate, identify, and appraise (at current market value), all property subject to ad valorem taxes, maintain market value equity on the tax roll, and administer all exemptions in accordance with Florida Statutes and the Rules and Regulations of the Florida Department of Revenue



Featured: [TRIM Brochure](#) - [Portability Explained](#) - [Property Appraisal Explained](#) - [SOH and Tax Shock Video](#)

**TRIM Brochure
with TRIM FAQ**



**File for your TPP
Waiver online**



Download Our Data



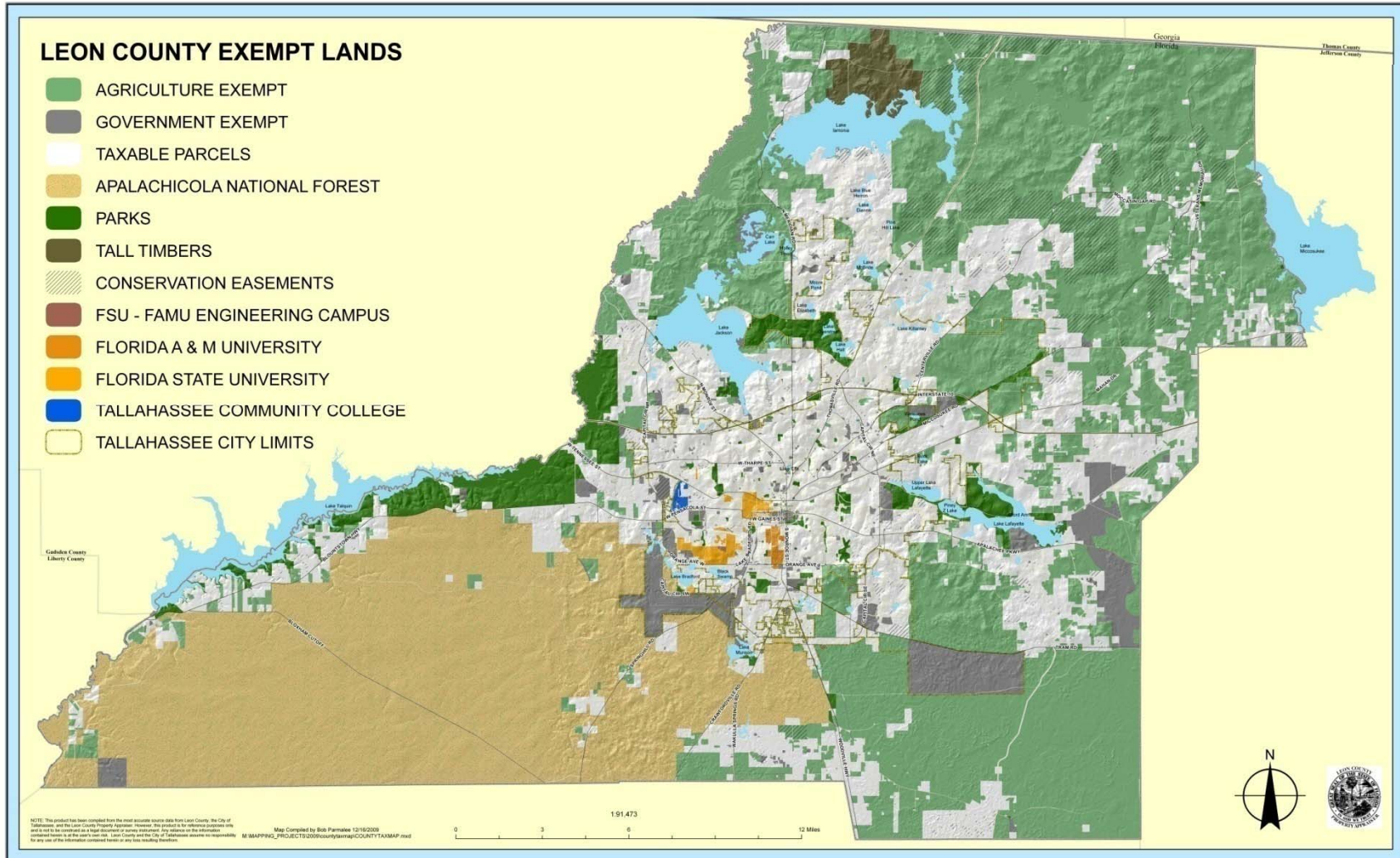
[Terms of Use](#) | [About Us](#) | [FAQ](#) | [Contact Us](#)

Courthouse Annex, 315 S. Calhoun St, Third Floor, Tallahassee, FL 32301

Phone (850) 488-6102 Fax (850) 922-7238

Office Hours: 8am - 5pm, Monday through Friday

County Map

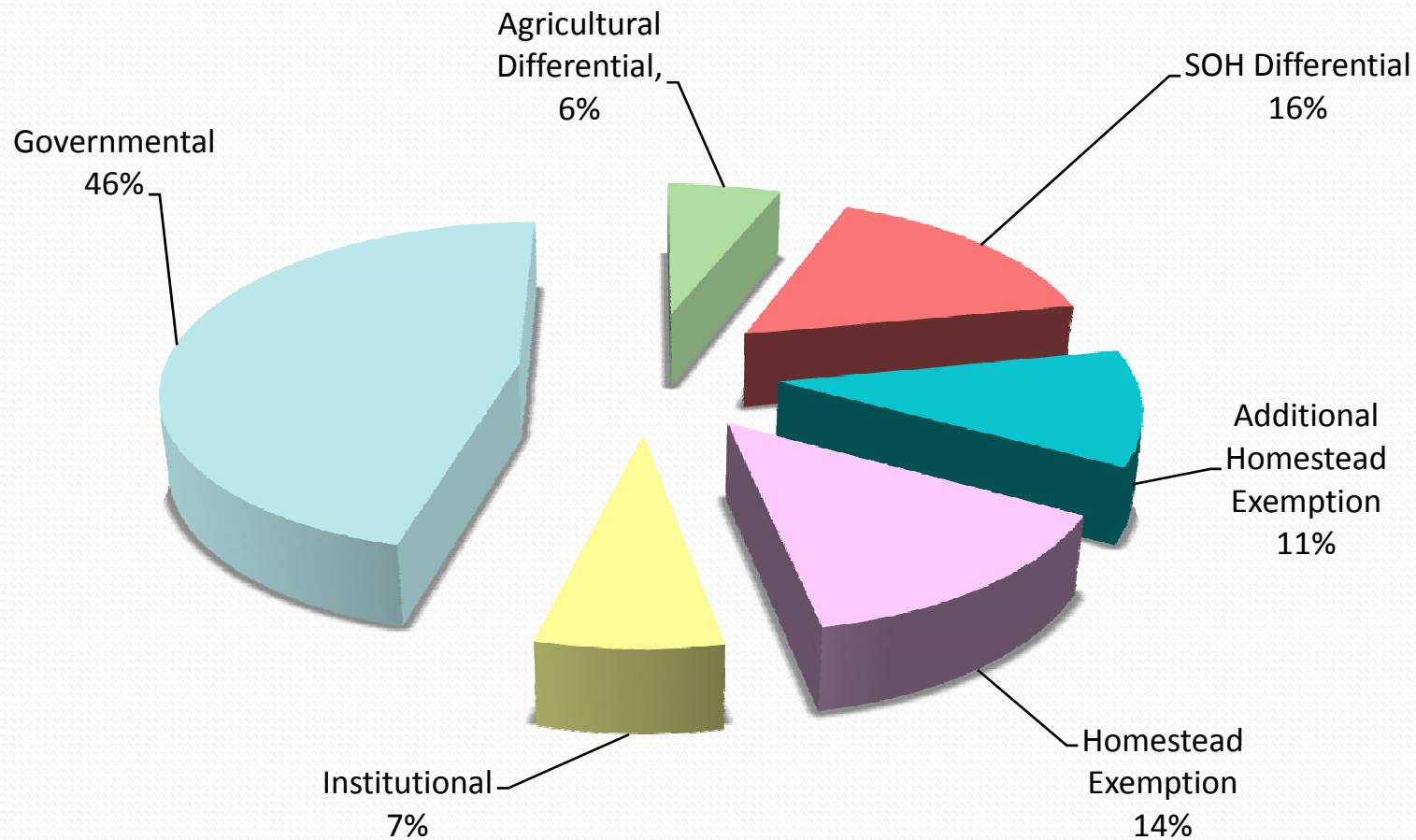




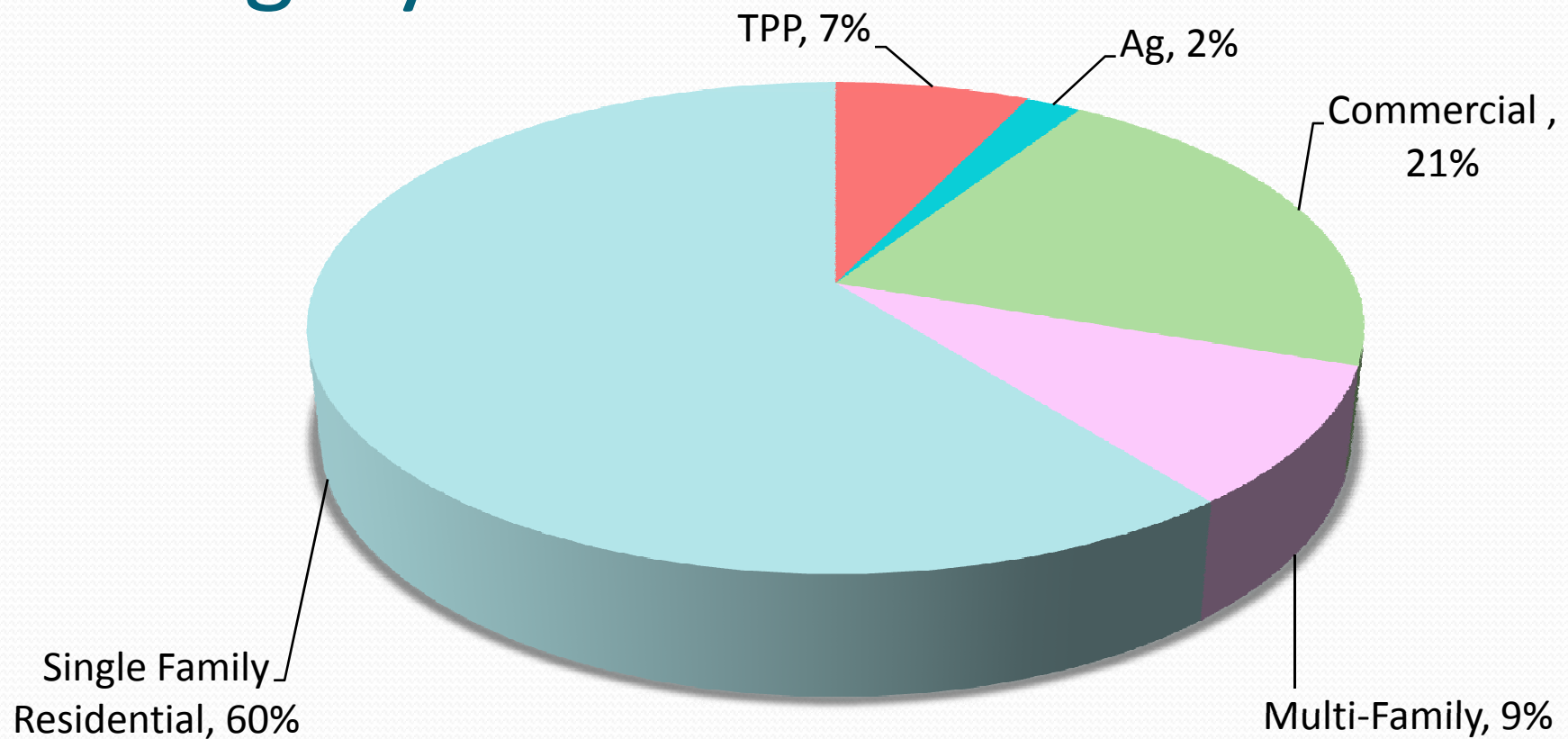
Just Value and Taxable Value 2009

- \$25,869,209,877 100% Just Value
- \$11,240,345,951 43% Exempt Value
- \$14,628,863,926 57% Taxable Value

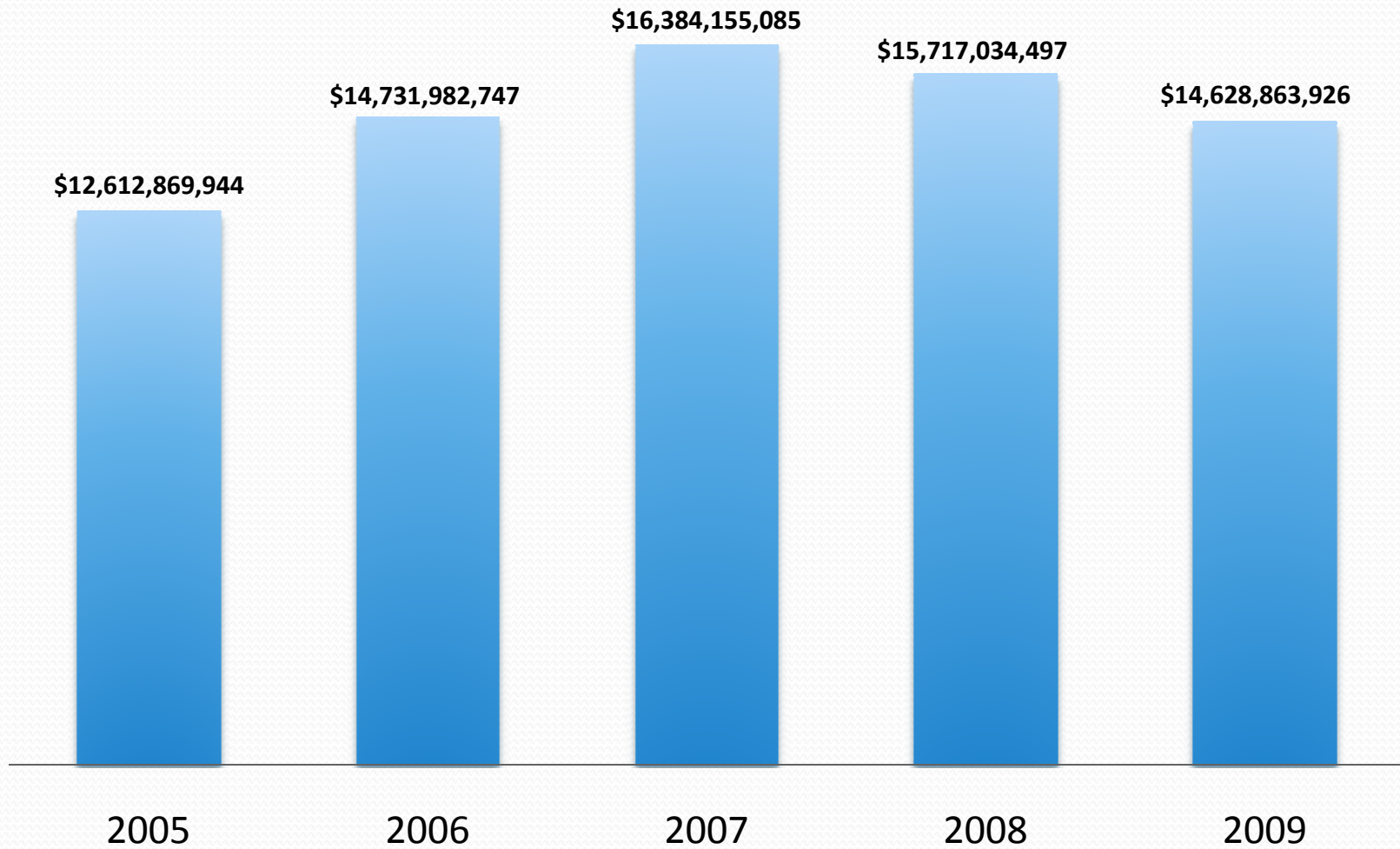
Breakdown of Exempt Value



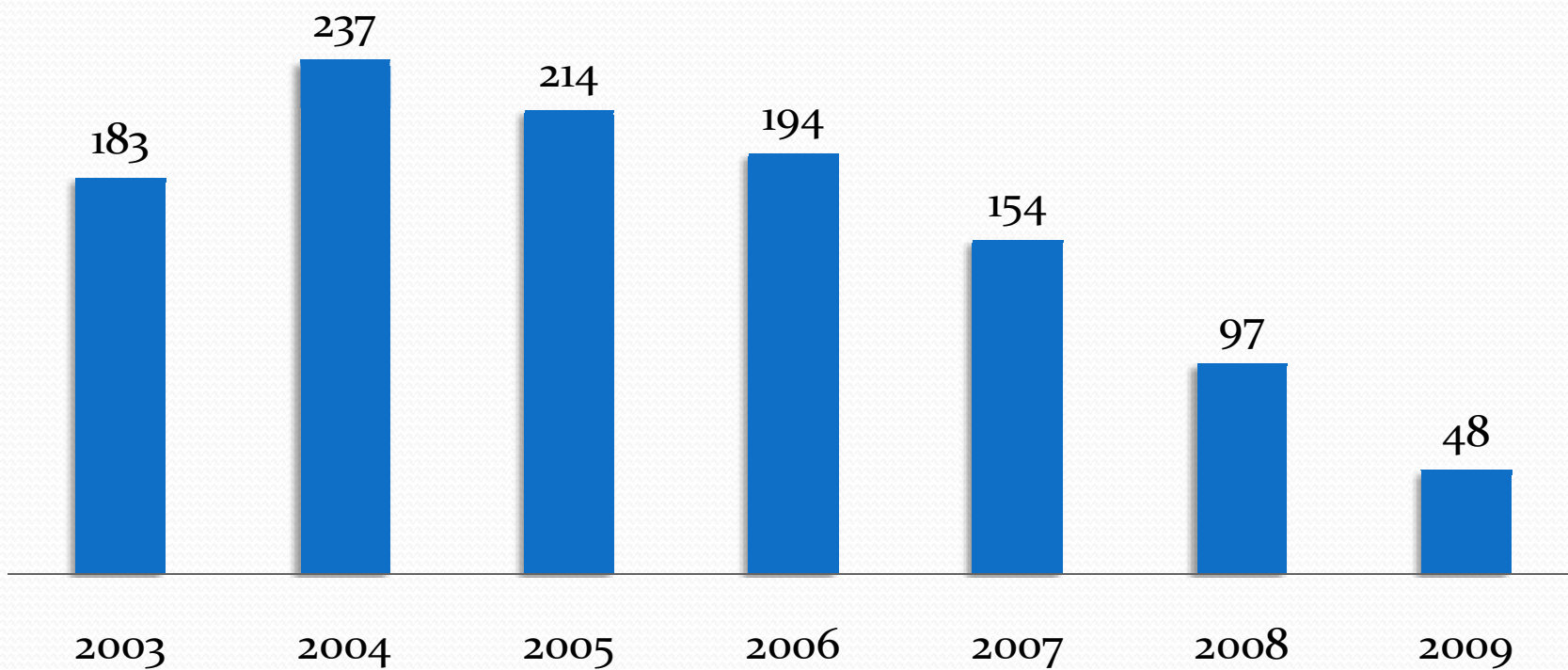
Breakdown of Taxable Value by Category



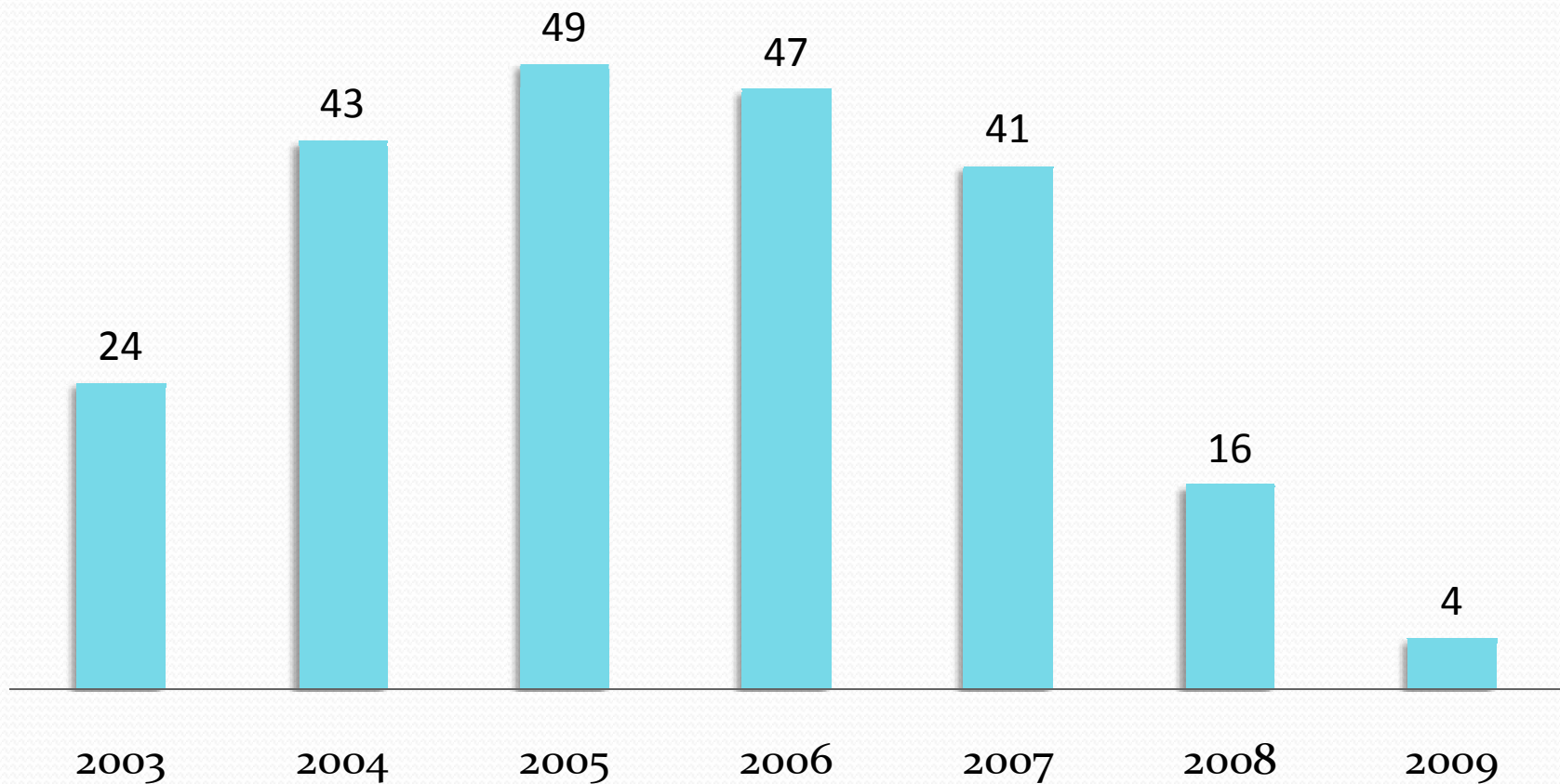
Taxable Value by Year



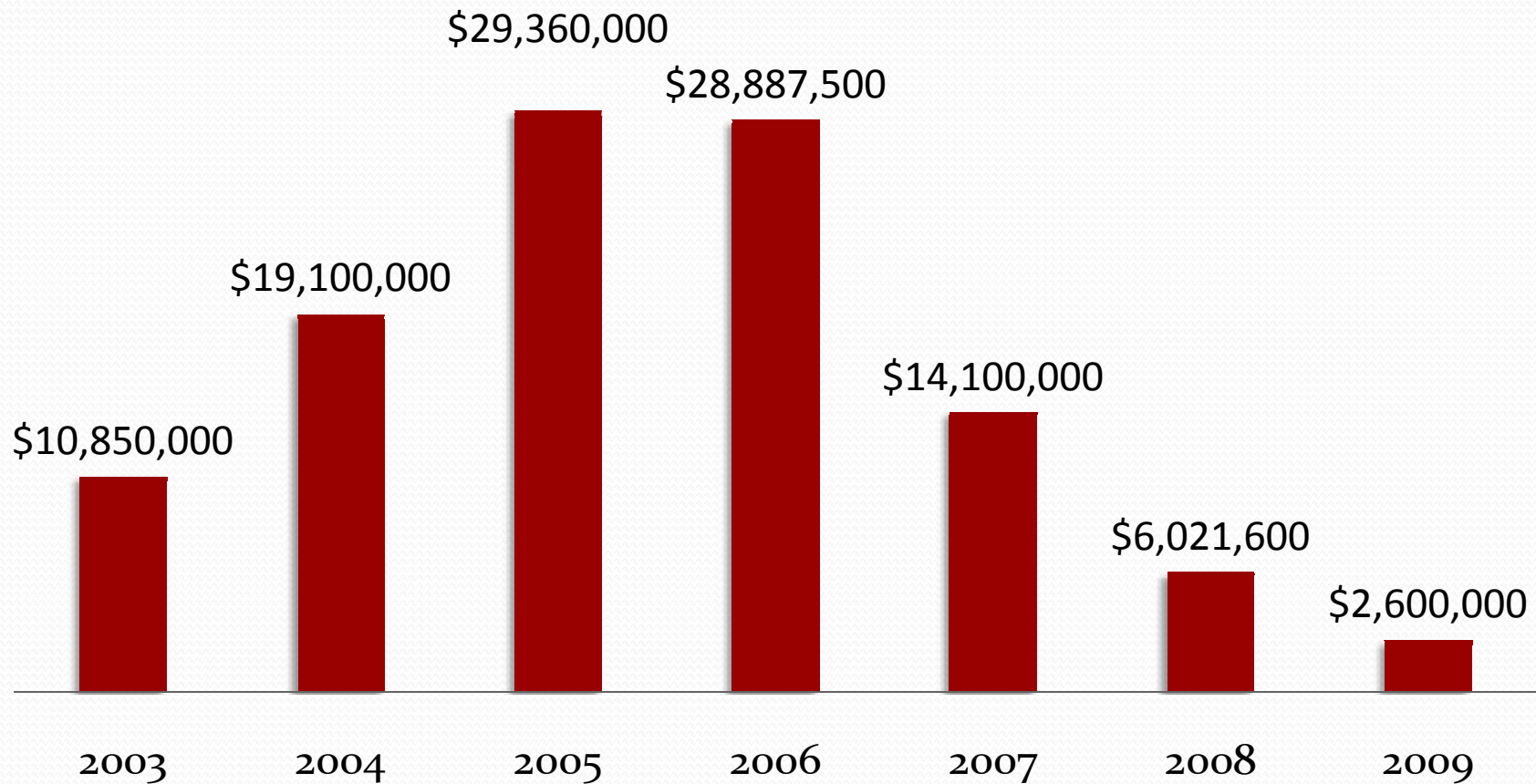
Total Number of Commercial Sales



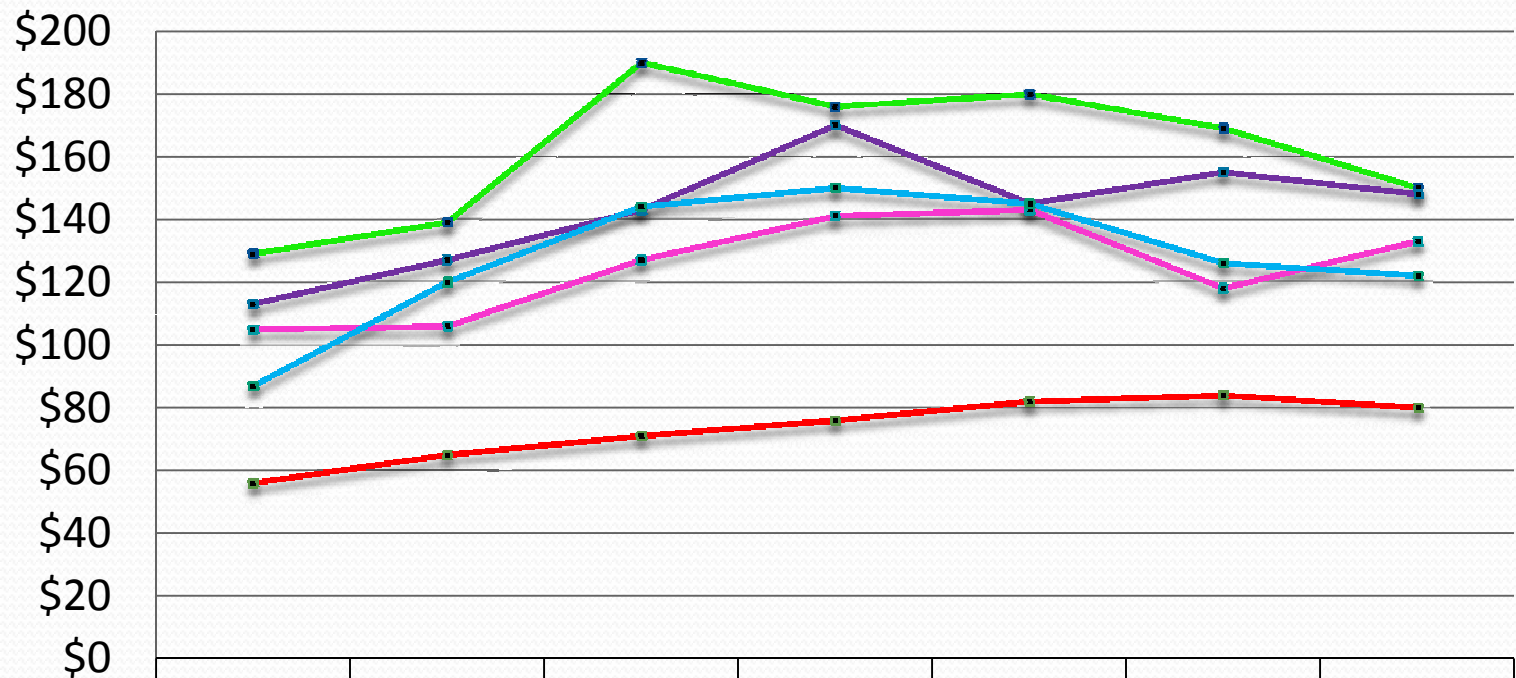
Number of Commercial Property Transactions Over \$1,000,000



Single Largest Commercial Property Transaction

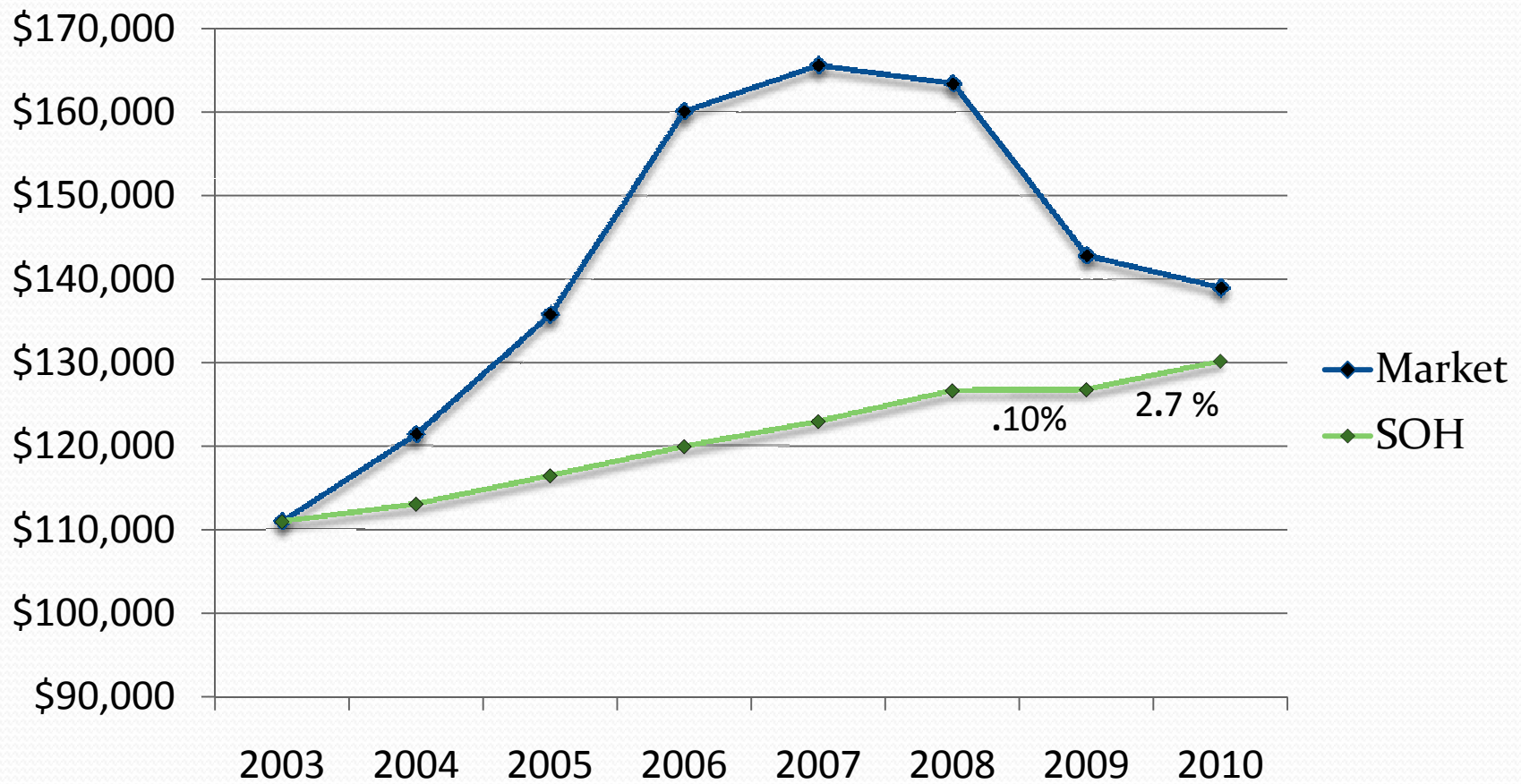


Commercial Average Sale Price Per Sq Ft

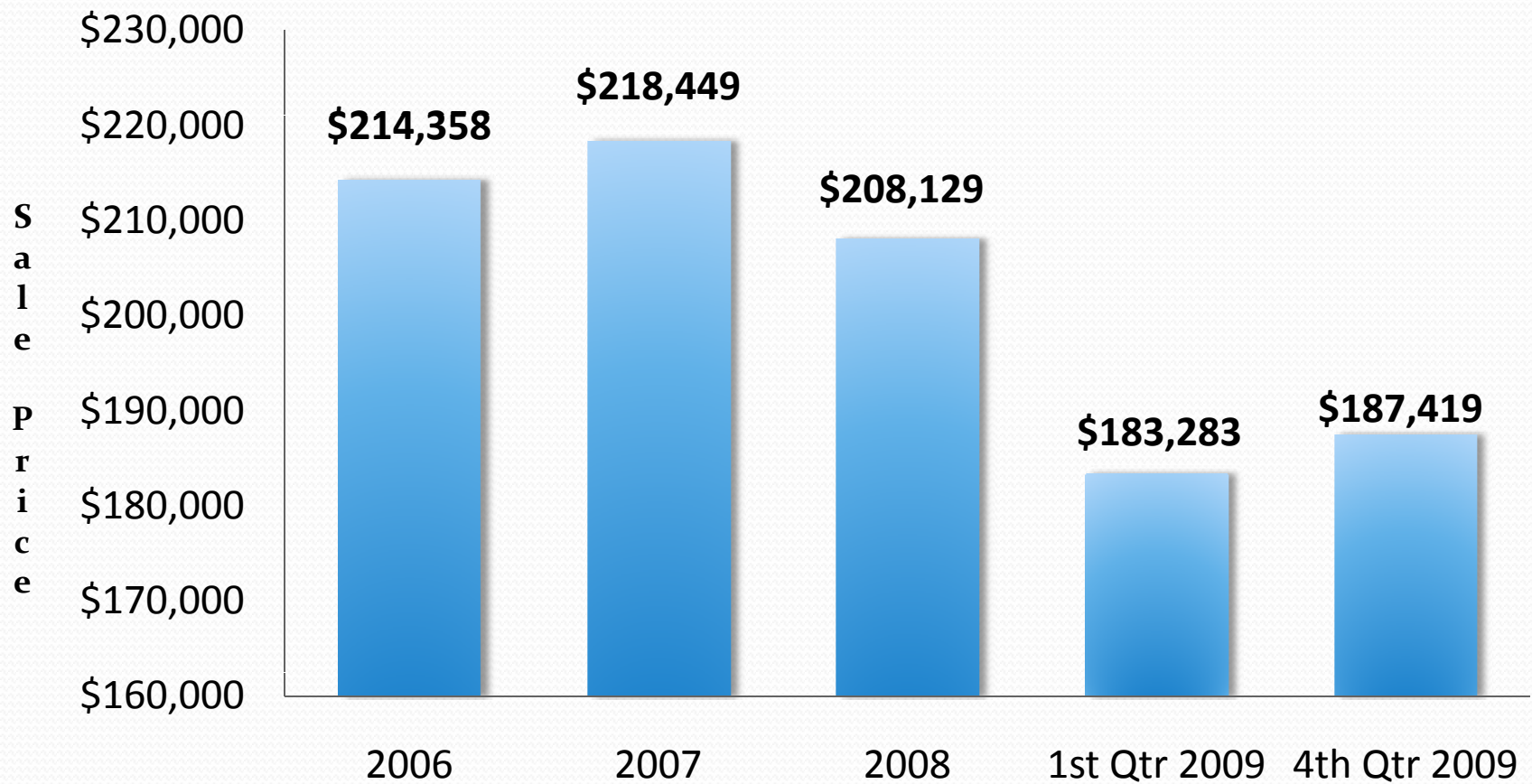


	2003	2004	2005	2006	2007	2008	2009
— SFR Conversion	\$129	\$139	\$190	\$176	\$180	\$169	\$150
— Office Condo	\$113	\$127	\$143	\$170	\$145	\$155	\$148
— Office 1 to 2 Story	\$105	\$106	\$127	\$141	\$143	\$118	\$133
— Store	\$87	\$120	\$144	\$150	\$145	\$126	\$122
— Warehouse	\$56	\$65	\$71	\$76	\$82	\$84	\$80

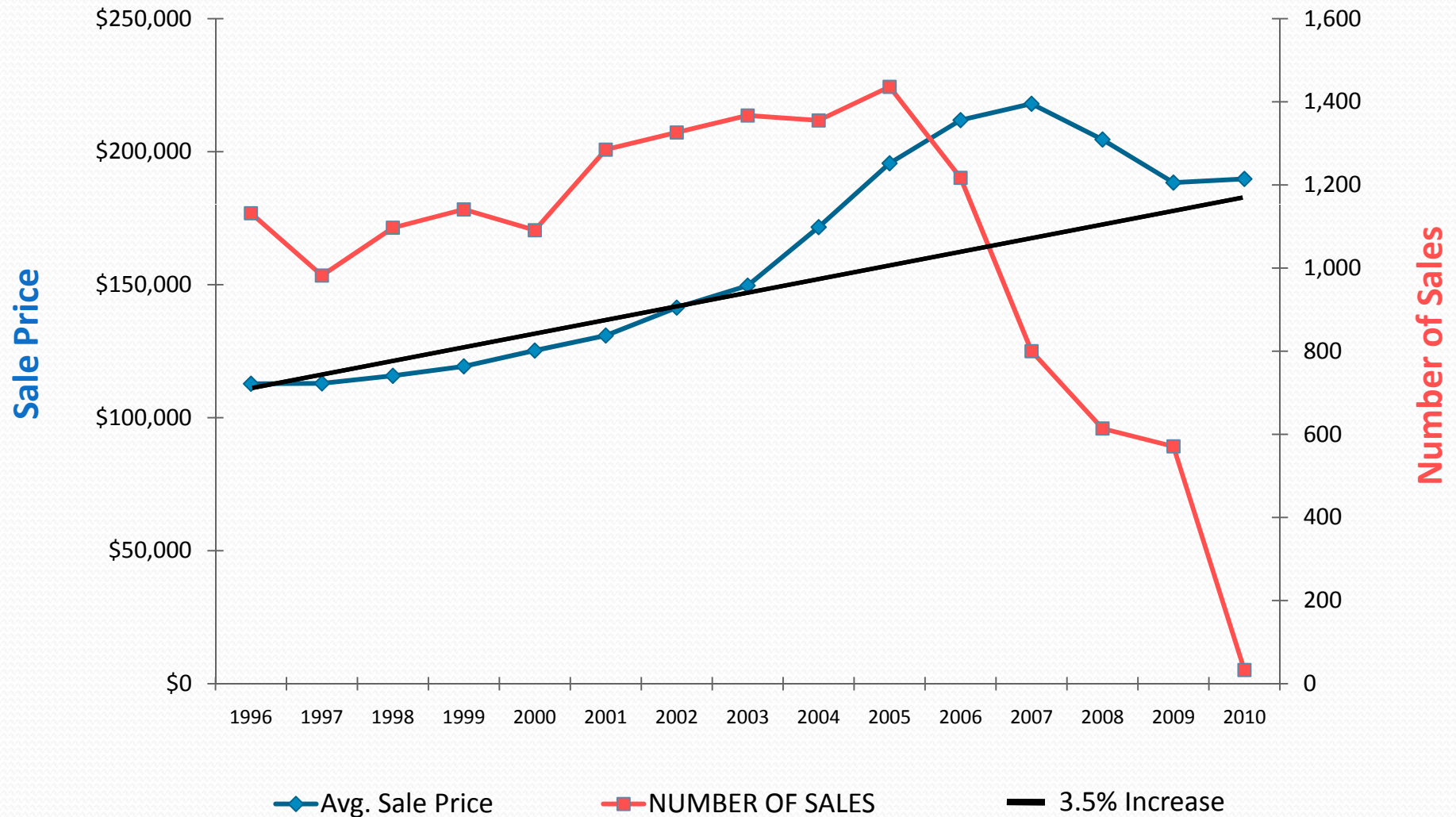
Market vs. Save Our Homes Values



Average Sale Price of the Average Home 2009



Grade 4.0 Average Sale Price



Fun Facts for Leon County

A couple of the Highest-Valued, Single Family Homes



2009 Taxes - \$38,544



2009 Taxes - \$30,504



Constitutional Tax Reform

- \$25, 000 Tangible Personal Property Exemption.
- Additional Homestead Exemption, up to \$25,000 (over \$50,000 in assessed value). This applies to Non-School Taxing Authorities only.
- 10% Cap on assessment increases on Non-Homestead properties. This applies to Non-School taxing Authorities only.
- Portability of SOH benefit.
- Conservation Easement Exemption.
- Senior Disabled Veterans tax discount.

Tiger Wood's Possible Future Home?



Taxes Land Only - \$500,000

Questions?

Call us at (850) 488-6102

Email us at admin@leonpa.org

Visit our website at leonpa.org

Thank you!!!